



# X SERIES

DIESEL TELEHANDLER

With capacity of 4,000kg



## HANGCHA GROUP CO., LTD.

Factory site: 666 Xiangfu Road,  
Hangzhou, Zhejiang, China (311305)

Tel: +86-571-88926735 88926755  
Fax: +86-571-88926789 88132890

sales@hcforklift.com www.hcforklift.com



Follow us on  
Facebook



Follow us on  
YouTube



Follow us on  
WeChat



Download "Hangcha  
Forklift" App



ISO45001:2018



ISO14001:2015



ISO9001:2015



HANGCHA trucks conform  
to the European Safety  
Requirements.

HANGCHA GROUP CO., LTD. reserves the right to make any changes without notice concerning colors, equipment, or specifications detailed in this brochure, or to discontinue individual models. The colors of trucks, delivered may differ slightly from those in brochures.



# X SERIES

## DIESEL TELEHANDLER

HANGCHA Family-Design exterior, ergonomic cab, intuitive HMI system and premium driving comfort experience.



With efficient operation performance, the maximum speed is 35 km/h, the maximum climbing ability is 40%, and the lifting height is industry-leading in the same category.

 **35 km/h** |  **40%**  
Drive speed (no load) | Gradeability



## HIGH-PERFORMANCE MACHINES IN ANY SITUATION

### THREE STEERING MODES:



### TWO DRIVING MODES:

**2WD**  
TWO-WHEEL DRIVE

**4WD**  
FOUR-WHEEL DRIVE



The machine is equipped with quick change device, which can realize the quick replacement of different attachments. This enables various operations including fork loading, shovel loading, clamping, aerial work, etc.

Key components are sourced from internationally renowned brands. Structural components are rigorously verified through both CAE analysis and actual measurements, ensuring high reliability.



# COMFORT

01

Adjustable suspension seat can provide more ergonomic.

02

Full-proportional joystick, smooth and coordinated movements, smooth and steady on start and stop, boom luffing and telescoping support multi-movements.

03

7 inch display, real-time machine status monitoring, integrated intelligent fault diagnosis system.

04

The cab can be equipped with air conditioning, radio, and USB charging port as option.

# MAINTENANCE

- A maintenance arm is provided on the vehicle to prevent the boom from accidentally falling during maintenance.
- Wide-angle tilting cover ensures easy maintenance access.

# SAFETY

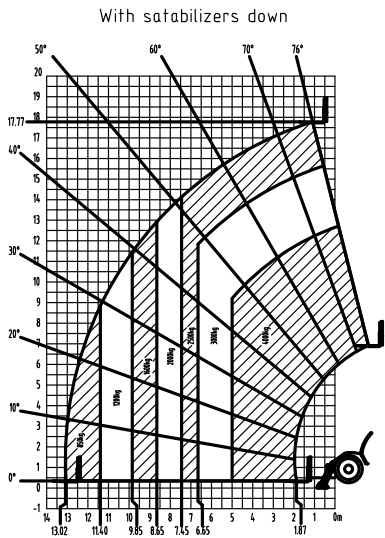
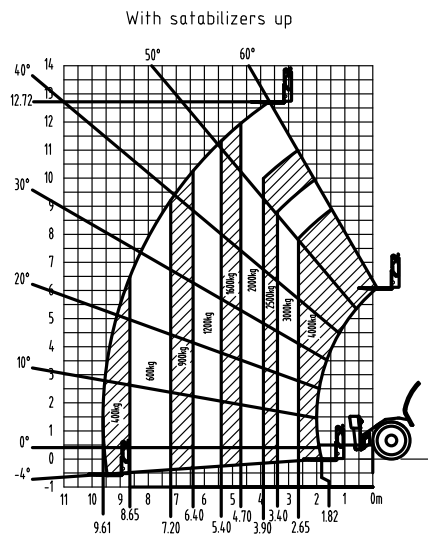
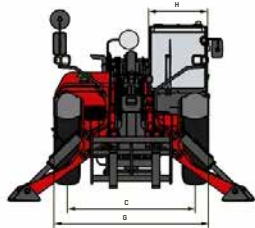
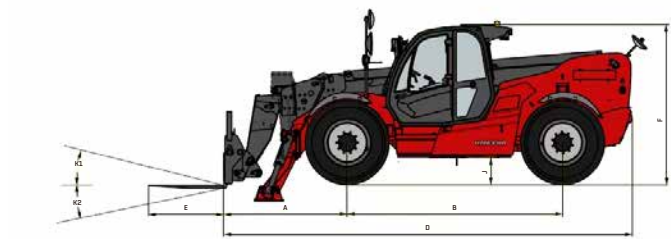
- The lighting system is excellent. Besides the High and low beam headlights, LED high-brightness working lights are also provided in the cab front and rear and the boom respectively, ensuring operation in night scenarios.
- Equipped with overload monitoring system, it can conduct real-time dynamic monitoring to prevent overturning and overloading, and timely restrict actions to avoid accidents.





Technical data

Lifting capacity		Manufacturer		HANGCHA GROUP CO.,LTD.
		Model		T40-180XH16D
		Max.lift capacity	kg	4000
		Lift capacity at maximum height	kg	2500
		Lift capacity at maximum reach	kg	850
		Max. lifting height	mm	17700
		Max. forward reach	mm	13020
Dimensions and Weight		Load centre distance	mm	500
	A	Front overhang	mm	1990
	B	Wheelbase	mm	3450
	C	Tread	mm	2050
	D	Overall length	mm	6630
	E	Fork dimension	mm	1200*122*50
	F	Overall height	mm	2500
	G	Overall width	mm	2450
	H	Cabin width	mm	940
	J	Min. Ground clearance	mm	400
	K1	Tilt-up angle	°	12
	K2	Tilt-down angle	°	114
	L	Min. turning radius	mm	4100
Wheels		Weight	kg	13700
		Tyre type		Vacuum tire
		Tyre size		400/75-28
		Drive wheel x Steering wheel		4x4
Performance parameters		Frame leveling Angle	°	10
		Boom lower/raise angle	°	-4/72
		Boom raising time (no load)	s	17
		Boom lowering time (no load)	s	15
		Extension time (no load)	s	20
		Retract time (no load)	s	16
		Fork backward time (no load)	s	6
		Fork forward time (no load)	s	6
		Max. travel speed (no load)	km/h	35
		Max. Drawbar pull	N	80000
		Gradeability	%	40
Power		Engine		Cummins F3.8 90kW EU StageV/EPA Tier4
		System voltage	V	24
		Battery	V/CCA	2x12V/600CCA
		Fuel tank capacity	L	160
		Hydraulic tank capacity	L	190



Features

Truck	Standard	Options
Air conditioner		<input type="radio"/>
Quick exchange fork carriage	●	
Adjustable suspension seat	●	
Flame retardant leather seats	●	
Traction device	●	
Load moment limiter Overload monitoring devise	●	
Left operable window	●	
Horn	●	
Key switch	●	
Wide angle L/R rearview mirrors	●	
Panoramic reversing mirror	●	
Front wiper with water spray function	●	
Rear window wiper	●	
High and low beam headlights	●	
Front and rear work lights	●	
Working light	●	
Reverse light	●	
Windshield protective frame		<input type="radio"/>
Fire Extinguisher		<input type="radio"/>
Foam filled tire		<input type="radio"/>
Quick change heavy Duty Multi-Purpose Bucket		<input type="radio"/>
Quick change crane arm		<input type="radio"/>
Forklift arm		<input type="radio"/>
400/75-28 Penumatic tire	●	
Fordward 4 gears/Reverse 3 gears	●	
Dual axis stabilizer	●	
Horizontal leveling system of the chassis	●	
Action buzzer	●	
Fuel filter	●	
Load backrest	●	
Quick change soft bag clip		<input type="radio"/>
Boom angle indicator		<input type="radio"/>
Steering		
Three steering modes	●	
Adjustable steering column	●	
Hydraulic		
Hydraulic quick coupler	●	
Tilt cylinder self-locking valve	●	
Self locking valve for telescopic oil cylinder	●	
Lifting cylinder self-locking valve	●	
Lifting cylinder maintenance arm	●	
Hydraulic Oil Filter	●	
Hydraulic oil air filter	●	
Hydraulic oil dipstick	●	
High efficient and adjustable flow hydraulic pump	●	
Power		
2WD and 4WD switch function	●	
Transmission		
Wet brake	●	
Limited slip differential	●	
Hydraulic power steering	●	
Control		
Dual axis proportional control handle	●	
Emergency stop switch	●	
Parking brake	●	
Electronics	Standard	Options
Fault self diagnosis function	●	
7-inch color multifunctional display screen	●	
Warning lamp for not fastening the seat belt	●	
Heater	●	
Reading light	●	
Radio	●	
Safety		
Warning light	●	
Reverse alarm	●	
Reverse camera		<input type="radio"/>
Reverse radar		<input type="radio"/>