

XC Series Electric Lithium-ion Personnel Carrier

770lb Load Capacity / 4,400lb Tow Capacity

HANGCHA Lithium-ion

Re-imagining **POWER**



Making Material Handling Easier
SINCE 1956


HANGCHA

APPEARANCE

The XC Series Electric Lithium-ion Personnel Carrier is designed to provide operators with a flexible option when moving goods, people and towing goods through North American warehouses, manufacturing facilities, and convention centers. Thanks to its versatile design, it is able to carry up to 770lbs or tow up to 4,400lbs. The exterior of the XC Series Electric Personnel Carrier is also powder coated in a durable, easy to see, green finish that designates it as lithium-ion powered.



SAFE

Hangcha designed the XC Series Electric Lithium-ion Personnel Carrier to be safe. By providing a front anti-collision bar, OPS System, and front/rear arm rests standard, Hangcha is able to keep operators safe while operating the lithium-ion personnel carrier.

- / The XC Series Electric Lithium-ion Personnel Carrier features a front anti-collision bar. This protects the front wheel from being hit and prevents items from getting tangled up underneath the personnel carrier.
- / This personnel carrier features an Operator Presence Sensing (OPS) System to ensure that it is safe and unintentional movements of the personnel carrier won't occur.
- / The XC Series Electric Lithium-ion Personnel Carrier features armrests for the front and back seats to provide the operator and passenger with effective support and ensure their safety.



The Front Anti-Collision Bar



COMFORTABLE OPERATION

Hangcha designed the XC Series Electric Lithium-ion Personnel Carrier to be comfortable and intuitive while operating. By providing a large operator compartment, suspended rear drive axle, and dual function brake pedal, Hangcha is able to provide operators with a comfortable operating environment.

- / The XC Series Electric Lithium-ion Personnel Carrier features a large operator compartment with low step-on height. This combined with the wide imitation leather seat and spacious legroom provide operators with a comfortable operating experience.
- / The rear wheel drive axle is connected to the chassis via a independent coil spring. This effectively absorbs vibrations while operating on rough surfaces and enhances the comfort and driving stability of the personnel carrier.
- / The LCD colored display allows operators to clearly see battery capacity, driving speed, and equipment hours. In addition, the screen also allows for fault diagnosis information to be displayed.
- / The personnel carrier is designed to be ergonomic. By placing the instrumentation, direction toggle switch, emergency cut-off switch, key switch, and head light switch on the center dashboard, the personnel carrier becomes intuitive and convenient to operate.
- / The large brake pedal and regenerative braking function effectively reduce operator fatigue to allow them to work longer. The brake pedal is also integrated with the parking brake to provide a simple and easy-to-engage design.
- / The versatile design allows for the backrest to fold down and provide seating for an additional person.



The ergonomically designed dashboard with a color LCD display.



Large Brake Pedal with Integrated Parking Brake Design



With the backrest folded down, the personnel carrier can carry an additional person.



RELIABLE & EASY TO MAINTAIN

Hangcha designed the XC Series Electric Lithium-ion Personnel Carrier to be reliable and easy to maintain. By using key components, specific designs, and testing, Hangcha is able to build a reliable personnel carrier that operators can count on.

- / Thanks to the electric lithium-ion design, the only maintenance required during the life cycle of the personnel carrier is to refill/change the lubricating oil.
- / The bottom cushion and cover can easily be removed to inspect and service the transmission and the electrical system.
- / The XC Series Electric Lithium-ion Personnel Carrier features an AC brushless drive motor and AC controller for increased performance and reliability. The drive motor also allows the personnel carrier to have regenerative braking and an anti-skidding function.



The AC Brushless Drive Motor

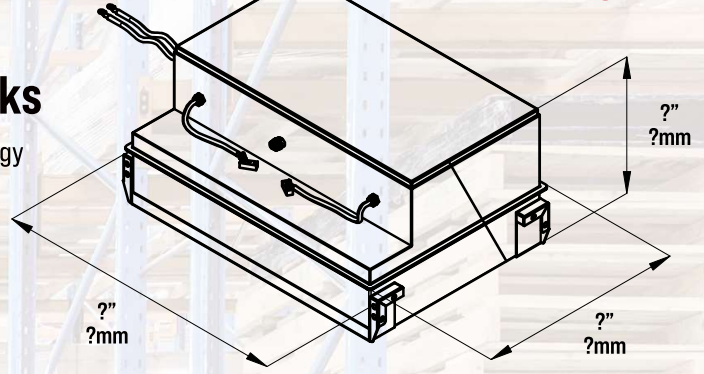


LITHIUM-ION POWER

CATL Lithium Iron Phosphate Battery Packs

- / Integrated Battery Management System (BMS) continually monitors energy management and ensures reliable operation.
- / HANGCHA provides these Lithium Iron Phosphate (LiFePO₄) battery packs with up to a 10 year or 20,000 hour warranty.
- / See warranty certificate for specific warranty information on the Lithium Iron Phosphate battery packs.

NEED Drawing



XC Series Electric Lithium-ion Personnel Carrier Lithium-ion Battery Capacity		
Load Capacity (lb)	Standard Battery Capacity (V/Ah) (kW-h)	Optional Battery Capacity (V/Ah) (kW-h)
740lbs	48V/80Ah 3.84kW-h	48V/105Ah 5.04kW-h

XC Series Electric Lithium-ion Personnel Carrier Lithium-ion Battery Running Times		
Load Capacity (lb)	Standard Battery Running Time (hour)	Optional Battery Running Time (hour)
740lbs	? hours	? hours

*Run time will be dependent on customer application and use.

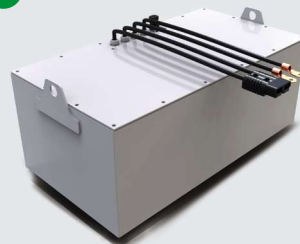
NEED to Confirm Warranty

NEED Run Times



Built-In Charger

The personnel carrier features an built-in charger with 100-240V/AC wide voltage. This charger can fully charge the personnel carrier in 3 hours and opportunity charge as needed.



Maintenance-Free Battery Pack

The personnel carrier features a Lithium Iron Phosphate (LiFePO₄) battery pack doesn't require any regular maintenance performed on the battery pack.

STANDARD CONFIGURATION

- / Powerful AC Traction Motor
- / Curtis Controller
- / CATL Lithium-ion Battery Pack
- / Pneumatic Tires
- / Built-In Charger
- / Multi-Function Instrument Cluster
- / Integral Rubber Pedal Pad

- / Three-Wheel Support (Single Front Steering Tire)
- / Front Anti-Collision Bar
- / Emergency Cut-Off Switch
- / USB Port
- / Electric Horn
- / Reverse Alarm

- / Mechanical Parking Handbrake
- / Operator Presence Sensing System (OPS)
- / Brake Pedal with Integrated Parking Brake
- / LED Headlight
- / LED Combination Taillight

- / Suspended Rear Wheel Drive Axle
- / Clipboard
- / Cupholder
- / Foldable Back Rest
- / Checkered Aluminum Plate Cargo Platform
- / Tow Pin Seat

OPTIONS

- / Larger Capacity CATL Lithium-ion Battery Pack
- / Toolbox

- / Four-Wheel Support (Dual Front Steering Tires)
- / Seat Belt

- / Steering Wheel
- / "T-Bar" Steering Control
- / Tow Pin Hook

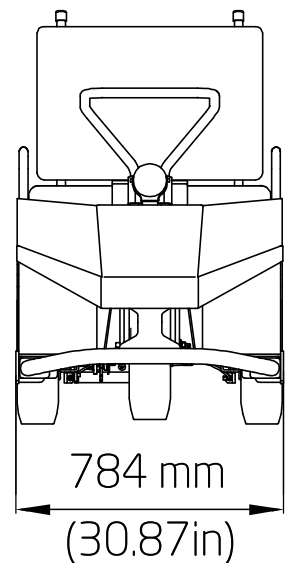
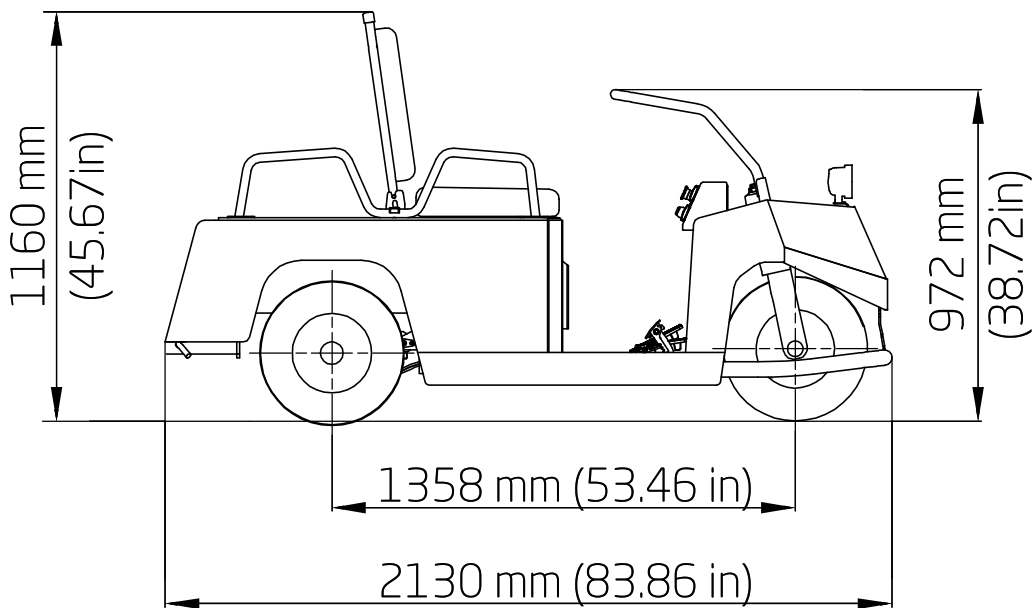
- / Strobe Light
- / Blue Light



XC Series Electric Lithium-ion Personnel Carrier

NEED HCFA Model

Distinguishing Marks	1.1	Manufacturer			HANGCHA GROUP CO.,LTD.
		HCFA Model Number			PC03Li
	1.2	Manufacturer's Type Designation			BD035-XC2-2I
	1.3	Power Type: Electric, Gas, Diesel, LPG			Electric
	1.4	Operation Type			Rider Seated
	1.5	Load Capacity/Rated Load	Q	lb(kg)	770(350)
		Towing Capacity		lb(kg)	4409(2200)
	1.8	Wheelbase	y	in(mm)	53.46(1358)
Weight	2.1	Service Weight		lb(kg)	1058(480)
Tires	3.1	Tire type			Pneumatic
	3.2	Tire Size, front			4.80x8-6 PR
	3.3	Tire Size, rear			4.80x8-6 PR
	3.4	Number of Wheels, front / rear(x=driven)			1/2x
Dimensions	4.7	Overall Length		in(mm)	83.86(2130)
	4.9	Overall Width		in(mm)	30.87(784)
	4.1.7	Turning Radius, outside		in(mm)	66.5(1690)
Performance Data	5.1	Travel Speed, with load	l_1	mph(km/h)	9.6 (15)
	5.6	Service Brake, operation / control	b_1		Foot / Mechanical
	5.7	Parking Brake, operation / control	w_0		Foot / Mechanical
	5.8	Steering, type			Mechanical Loop Tiller Control Bar
Electric Motor	6	Drive Motor			Three-Phase Electric AC Motor
	6.1	Drive Motor, 60 minute rating		HP (kw)	3.4(2.5)
	6.3	Battery Voltage		volts	48
	6.4	Battery Capacity		Ah	80
Additional Data	7.2	Controller Manufacturer			Curtis

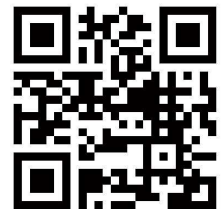




Company Address:
1338 Hundred Oaks Drive, Suite DD
Charlotte, NC 28217

Toll Free: (888) 652-8395
Phone: (980) 888-8335
Fax: (980) 888-8336

america@hcforklift.com
www.hcforkliftamerica.com



ISO9001:2015



ISO14001:2015

HANGCHA GROUP CO., LTD. reserves the right to make any changes without notice concerning colors, equipment, or specifications detailed in this brochure, or to discontinue individual models. The colors of trucks, delivered may differ slightly from those in brochures.